

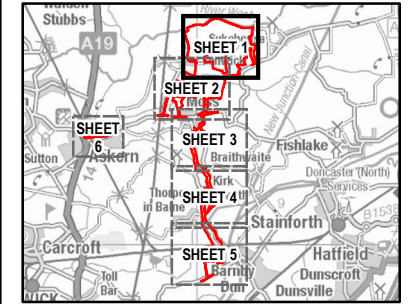


LEGEND

- Site Boundary
- Watercourse
- High Pressure Fuel Pipeline
- Existing Overhead Line (OHL)

Scheme Element

- Perimeter Fencing
- Internal Access Track
- Horizontal Directional Drilling (HDD) Location
- Grid Connection Line Drop
- Existing Hedgerow to be Gapped Up
- ▲ Proposed Access Gate
- ✕ Watercourse Crossing
- ✕ Hedge Removal
- Field Station
- Operations & Maintenance Hub
- Indicative Location of Temporary Construction Compound
- Solar PV Panels (Land Beneath and Surrounding Panels to be Grassed)
- Proposed Screening Area
- Grid Connection Line Drop Compound
- Ecology Mitigation Area
- Heritage Buffer Area



ISSUE PURPOSE
PEIR

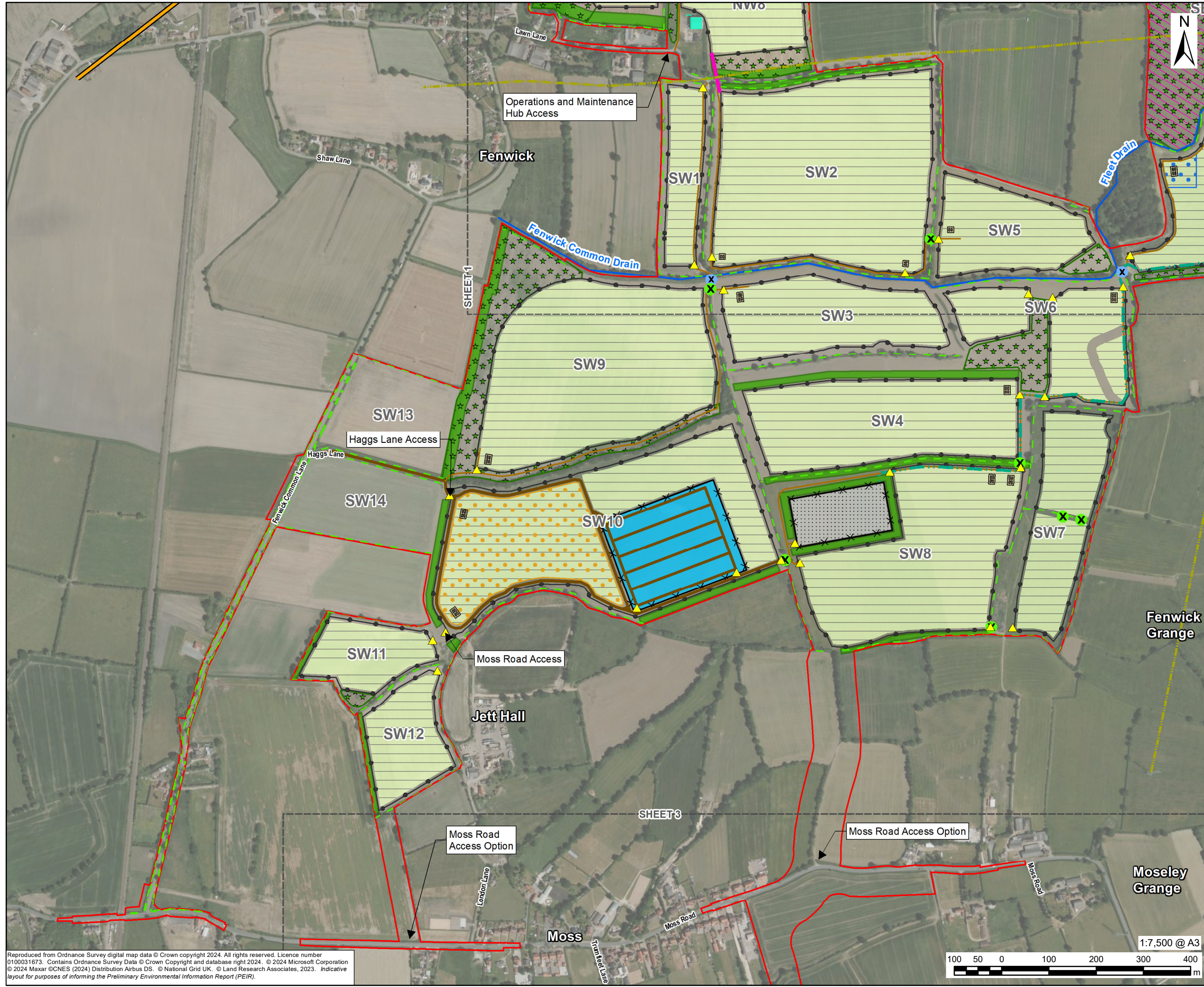
PROJECT NUMBER
60698207

FIGURE TITLE
Indicative Site Layout
Sheet 1 of 6

FIGURE NUMBER
Figure 2-3

Reproduced from Ordnance Survey digital map data © Crown copyright 2024. All rights reserved. Licence number 0100031673. Contains Ordnance Survey Data © Crown Copyright and database right 2024. © 2024 Microsoft Corporation © 2024 Maxar © CNES (2024) Distribution Airbus DS. © National Grid UK. © Land Research Associates, 2023. Indicative layout for purposes of informing the Preliminary Environmental Information Report (PEIR).

This drawing has been prepared for the use of AECOM's client. It may not be used, modified, reproduced or relied upon by third parties, except as agreed by AECOM or as required by law. AECOM accepts no responsibility, and denies any liability whatsoever, to any party that uses or relies on this drawing without AECOM's express written consent. Do not scale this document. All measurements must be obtained from the stated dimensions.

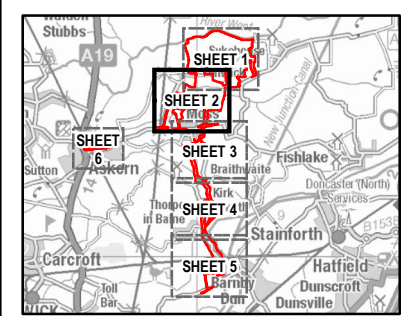


PROJECT
Fenwick Solar Farm

CLIENT
Fenwick Solar Project Limited

CONSULTANT
AECOM Limited
Midpoint,
Alencon Link
Basingstoke, RG21 7PP
www.aecom.com

- LEGEND**
- Site Boundary
 - Watercourse
 - High Pressure Fuel Pipeline
 - Existing Overhead Line (OHL)
 - Scheme Element**
 - Perimeter Fencing
 - Pallisade Fencing
 - Internal Access Track
 - Internal Fire Service Access Track
 - Horizontal Directional Drilling (HDD) Location
 - Grid Connection Line Drop
 - Existing Hedgerow to be Gapped Up
 - ▲ Proposed Access Gate
 - ✕ Watercourse Crossing
 - ✕ Hedge Removal
 - Field Station
 - Operations & Maintenance Hub
 - Main Construction Compound
 - Indicative Location of Temporary Construction Compound
 - BESS Area
 - Grid Connection Substation
 - Solar PV Panels (Land Beneath and Surrounding Panels to be Grassed)
 - Proposed Screening Area
 - Ecology Mitigation Area
 - Heritage Buffer Area



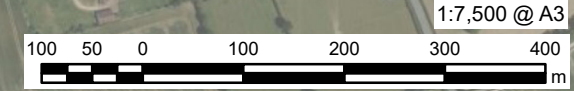
ISSUE PURPOSE
PEIR

PROJECT NUMBER
60698207

FIGURE TITLE
Indicative Site Layout
Sheet 2 of 6

FIGURE NUMBER
Figure 2-3

Reproduced from Ordnance Survey digital map data © Crown copyright 2024. All rights reserved. Licence number 0100031673. Contains Ordnance Survey Data © Crown Copyright and database right 2024. © 2024 Microsoft Corporation © 2024 Maxar © CNES (2024) Distribution Airbus DS. © National Grid UK. © Land Research Associates, 2023. Indicative layout for purposes of informing the Preliminary Environmental Information Report (PEIR).



1:7,500 @ A3



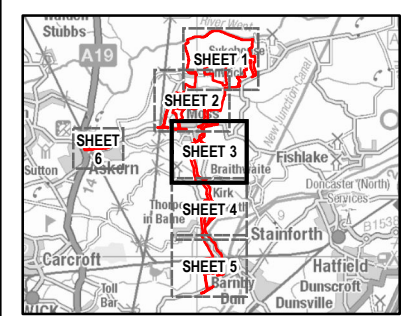
PROJECT
Fenwick Solar Farm

CLIENT
Fenwick Solar Project Limited

CONSULTANT
AECOM Limited
Midpoint,
Alencon Link
Basingstoke, RG21 7PP
www.aecom.com

LEGEND

Scheme Element	
	Site Boundary
	Horizontal Directional Drilling (HDD) Location
	Existing Hedgerow to be Gapped Up
	Indicative Location of Temporary Construction Compound
	Proposed Screening Area



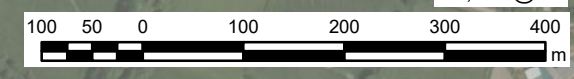
ISSUE PURPOSE
PEIR

PROJECT NUMBER
60698207

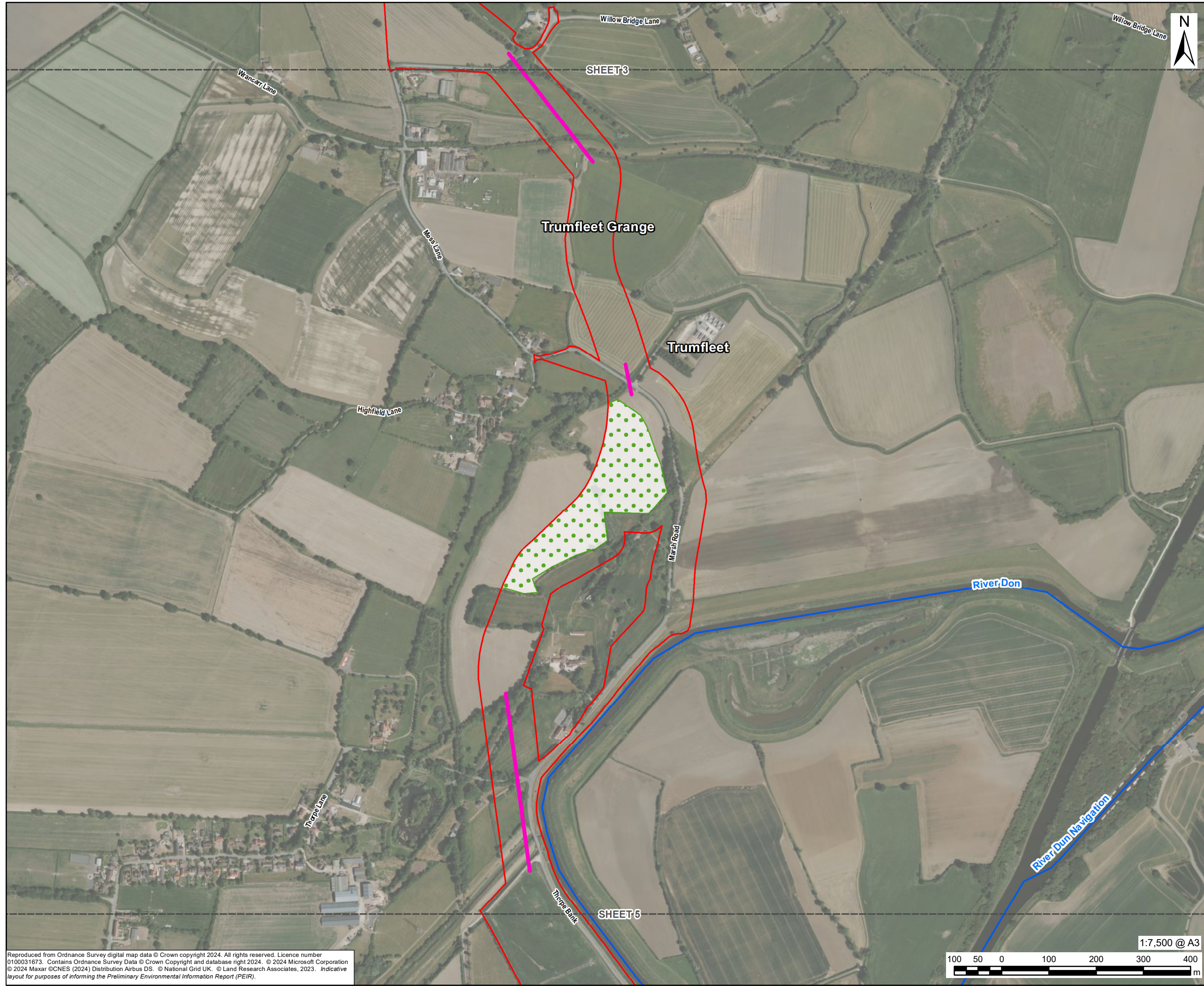
FIGURE TITLE
Indicative Site Layout
Sheet 3 of 6

FIGURE NUMBER
Figure 2-3

Reproduced from Ordnance Survey digital map data © Crown copyright 2024. All rights reserved. Licence number 0100031673. Contains Ordnance Survey Data © Crown Copyright and database right 2024. © 2024 Microsoft Corporation © 2024 Maxar © CNES (2024) Distribution Airbus DS. © National Grid UK. © Land Research Associates, 2023. Indicative layout for purposes of informing the Preliminary Environmental Information Report (PEIR).



This drawing has been prepared for the use of AECOM's client. It may not be used, modified, reproduced or relied upon by third parties, except as agreed by AECOM or as required by law. AECOM accepts no responsibility, and denies any liability whatsoever, to any party that uses or relies on this drawing without AECOM's express written consent. Do not scale this document. All measurements must be obtained from the stated dimensions.



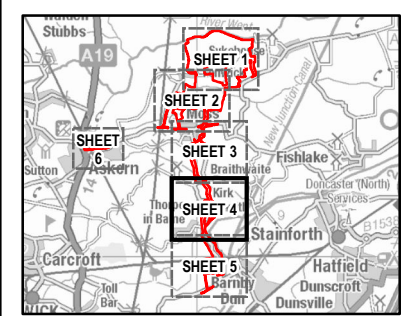
AECOM

PROJECT
Fenwick Solar Farm

CLIENT
Fenwick Solar Project Limited

CONSULTANT
AECOM Limited
Midpoint,
Alencon Link
Basingstoke, RG21 7PP
www.aecom.com

- LEGEND**
- Site Boundary
 - Watercourse
 - Horizontal Directional Drilling (HDD) Location
 - Indicative Location of Temporary Construction Compound



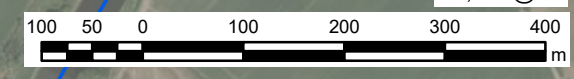
ISSUE PURPOSE
PEIR

PROJECT NUMBER
60698207

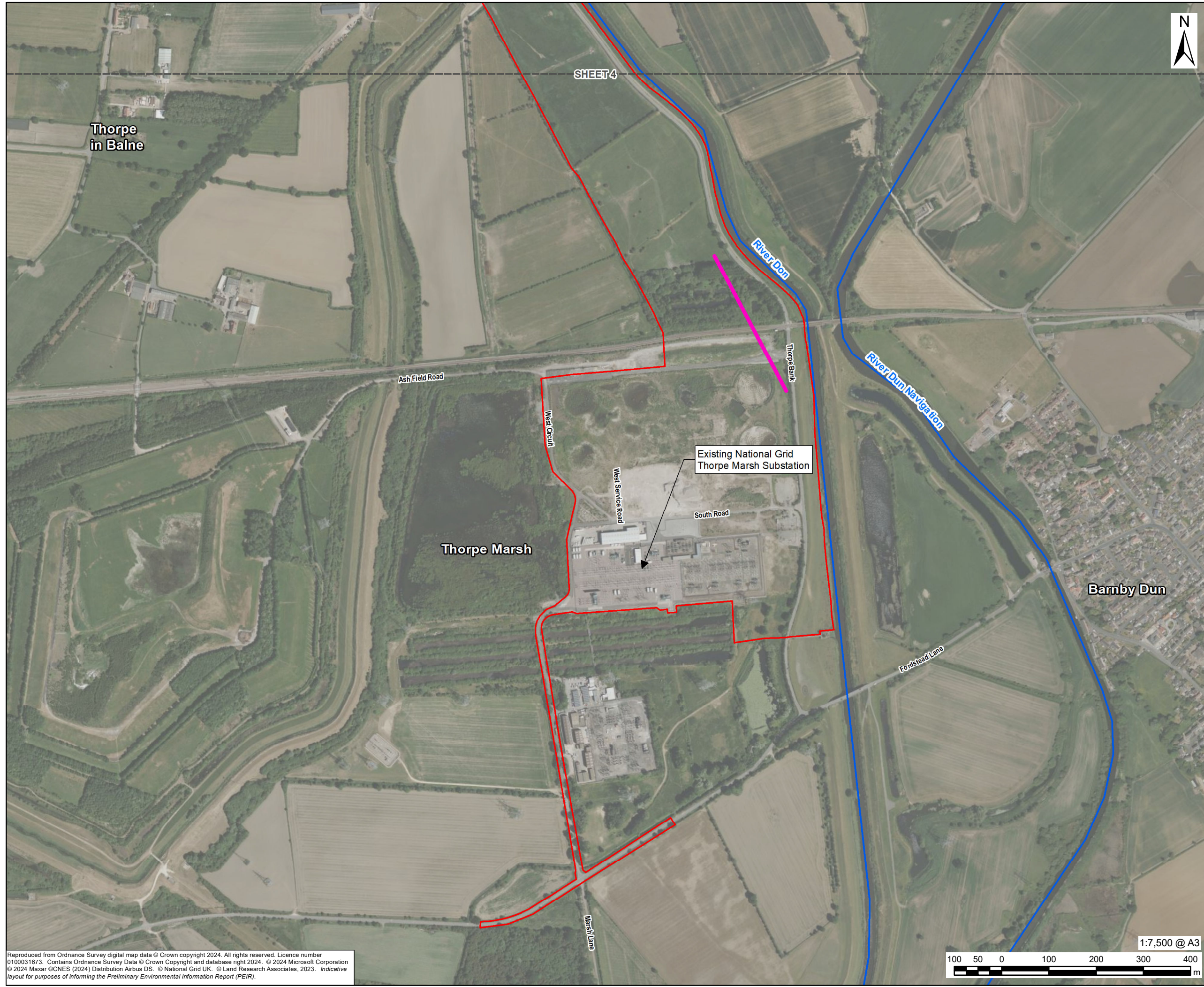
FIGURE TITLE
Indicative Site Layout
Sheet 4 of 6

FIGURE NUMBER
Figure 2-3

Reproduced from Ordnance Survey digital map data © Crown copyright 2024. All rights reserved. Licence number 0100031673. Contains Ordnance Survey Data © Crown Copyright and database right 2024. © 2024 Microsoft Corporation © 2024 Maxar © CNES (2024) Distribution Airbus DS. © National Grid UK. © Land Research Associates, 2023. Indicative layout for purposes of informing the Preliminary Environmental Information Report (PEIR).



This drawing has been prepared for the use of AECOM's client. It may not be used, modified, reproduced or relied upon by third parties, except as agreed by AECOM or as required by law. AECOM accepts no responsibility, and denies any liability whatsoever, to any party that uses or relies on this drawing without AECOM's express written consent. Do not scale this document. All measurements must be obtained from the stated dimensions.



AECOM

PROJECT
Fenwick Solar Farm

CLIENT
Fenwick Solar Project Limited

CONSULTANT
AECOM Limited
Midpoint,
Alencon Link
Basingstoke, RG21 7PP
www.aecom.com

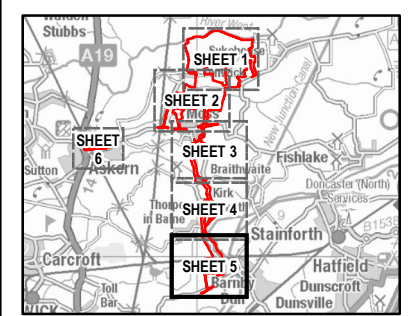
LEGEND

Site Boundary (Red line)

Watercourse (Blue line)

Scheme Element

Horizontal Directional Drilling (HDD) Location (Pink line)



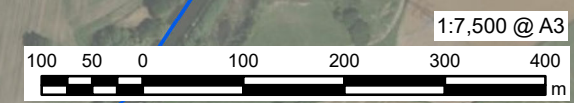
ISSUE PURPOSE
PEIR

PROJECT NUMBER
60698207

FIGURE TITLE
Indicative Site Layout
Sheet 5 of 6

FIGURE NUMBER
Figure 2-3

Reproduced from Ordnance Survey digital map data © Crown copyright 2024. All rights reserved. Licence number 0100031673. Contains Ordnance Survey Data © Crown Copyright and database right 2024. © 2024 Microsoft Corporation © 2024 Maxar © CNES (2024) Distribution Airbus DS. © National Grid UK. © Land Research Associates, 2023. Indicative layout for purposes of informing the Preliminary Environmental Information Report (PEIR).



This drawing has been prepared for the use of AECOM's client. It may not be used, modified, reproduced or relied upon by third parties, except as agreed by AECOM or as required by law. AECOM accepts no responsibility, and denies any liability whatsoever, to any party that uses or relies on this drawing without AECOM's express written consent. Do not scale this document. All measurements must be obtained from the stated dimensions.



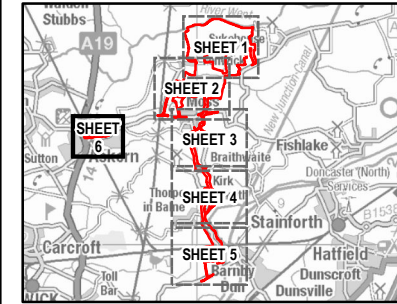
AECOM

PROJECT
Fenwick Solar Farm

CLIENT
Fenwick Solar Project Limited

CONSULTANT
AECOM Limited
Midpoint,
Alencon Link
Basingstoke, RG21 7PP
www.aecom.com

LEGEND
[Red outline box] Site Boundary



ISSUE PURPOSE
PEIR

PROJECT NUMBER
60698207

FIGURE TITLE
Indicative Site Layout
Sheet 6 of 6

FIGURE NUMBER
Figure 2-3

Reproduced from Ordnance Survey digital map data © Crown copyright 2024. All rights reserved. Licence number 0100031673. Contains Ordnance Survey Data © Crown Copyright and database right 2024. © 2024 Microsoft Corporation © 2024 Maxar © CNES (2024) Distribution Airbus DS. © National Grid UK. © Land Research Associates, 2023. Indicative layout for purposes of informing the Preliminary Environmental Information Report (PEIR).



The drawing has been prepared for the use of AECOM's client. It may not be used, modified, reproduced or relied upon by third parties, except as agreed by AECOM or as required by law. AECOM accepts no responsibility, and denies any liability whatsoever, to any party that uses or relies on this drawing without AECOM's express written consent. Do not scale this document. All measurements must be obtained from the stated dimensions.