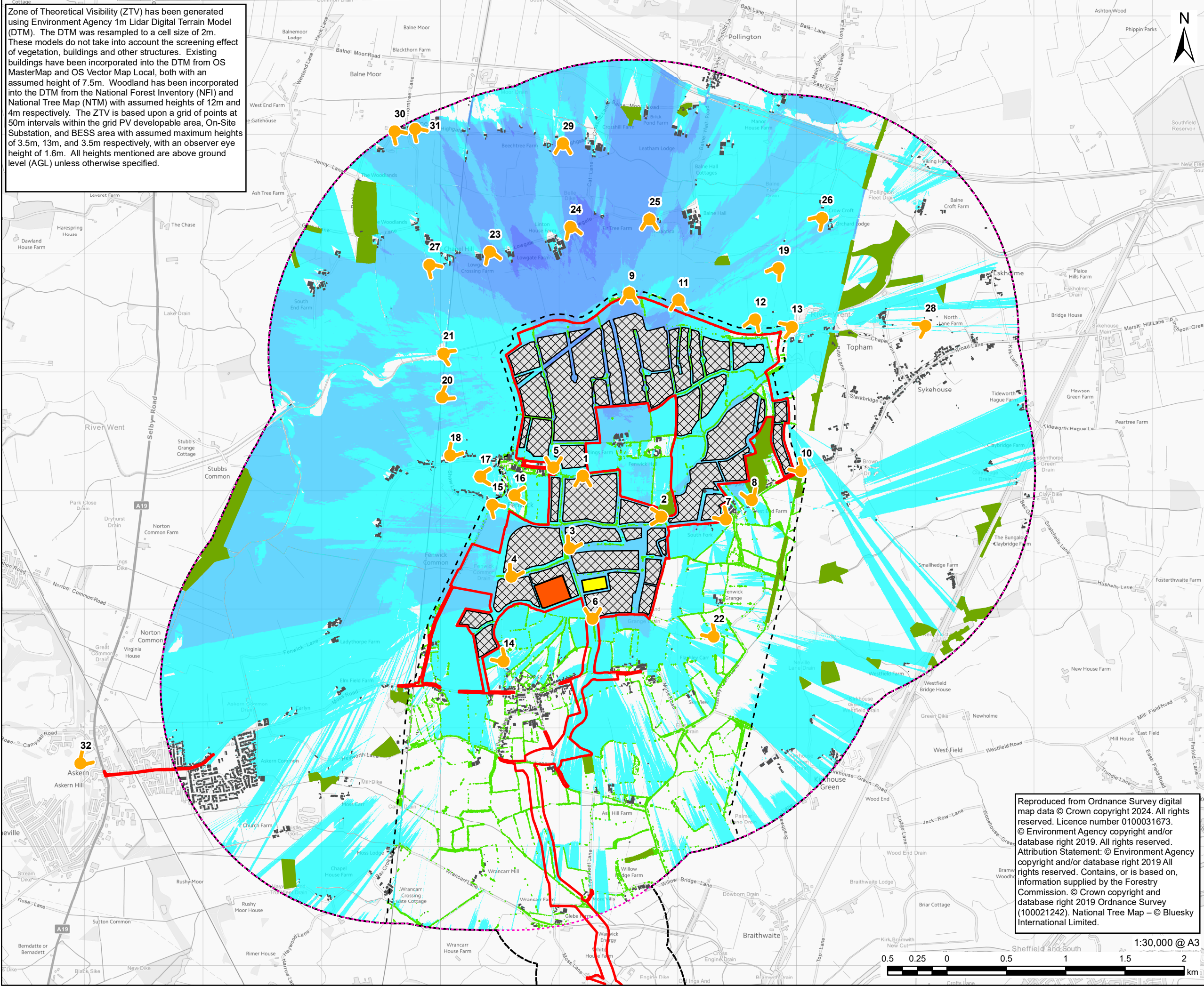


Zone of Theoretical Visibility (ZTV) has been generated using Environment Agency 1m Lidar Digital Terrain Model (DTM). The DTM was resampled to a cell size of 2m. These models do not take into account the screening effect of vegetation, buildings and other structures. Existing buildings have been incorporated into the DTM from OS MasterMap and OS Vector Map Local, both with an assumed height of 7.5m. Woodland has been incorporated into the DTM from the National Forest Inventory (NFI) and National Tree Map (NTM) with assumed heights of 12m and 4m respectively. The ZTV is based upon a grid of points at 50m intervals within the grid PV developable area, On-Site Substation, and BESS area with assumed maximum heights of 3.5m, 13m, and 3.5m respectively, with an observer eye height of 1.6m. All heights mentioned are above ground level (AGL) unless otherwise specified.



Reproduced from Ordnance Survey digital map data © Crown copyright 2024. All rights reserved. Licence number 0100031673.
 © Environment Agency copyright and/or database right 2019. All rights reserved. Attribution Statement: © Environment Agency copyright and/or database right 2019 All rights reserved. Contains, or is based on, information supplied by the Forestry Commission. © Crown copyright and database right 2019 Ordnance Survey (100021242). National Tree Map – © Bluesky International Limited.



PROJECT
Fenwick Solar Farm

CLIENT
Fenwick Solar Project Limited

CONSULTANT
AECOM Limited
Midpoint,
Alencon Link
Basingstoke, RG21 7PP
www.aecom.com

- LEGEND**
- Site Boundary
 - Landscape and Visual Amenity Study Area (2km Buffer of the Solar PV Site and 500m Buffer of the Grid Connection Corridor)
 - Extent of ZTV Analysis
 - Proposed Viewpoint Location (rotated to indicate direction)
 - On-Site Substation
 - BESS Area
 - PV Developable Area
 - National Forest Inventory (NFI) - Assumed Height 12m
 - National Tree Map (NTM) - Assumed Height 4m
 - Extent of NTM Woodland Data
 - Existing Building / Structure - Assumed Height 7.5m
- Zone of Theoretical Visibility (ZTV) - Degree of Maximum Visibility**
- 1 - 10%
 - 11 - 20%
 - 21 - 30%
 - 31 - 40%
 - 41 - 50%
 - 51 - 60%
 - 51 - 70%
 - 71 - 80%
 - 81 - 90%
 - 91 - 100%

ISSUE PURPOSE

PEIR

PROJECT NUMBER

60698207

FIGURE TITLE

Screened Zone of Theoretical Visibility - All Features

FIGURE NUMBER

Figure 10-8

This drawing has been prepared for the use of AECOM's client. It may not be used, modified, reproduced or relied upon by third parties, except as agreed by AECOM or as required by law. AECOM accepts no responsibility, and denies any liability whatsoever, to any party that uses or relies on this drawing without AECOM's express written consent. Do not scale this document. All measurements must be obtained from the stated dimensions.